

Ambient Series

Wind Load Options



120-140 MPH



Model 84 in Walnut 16'x7'

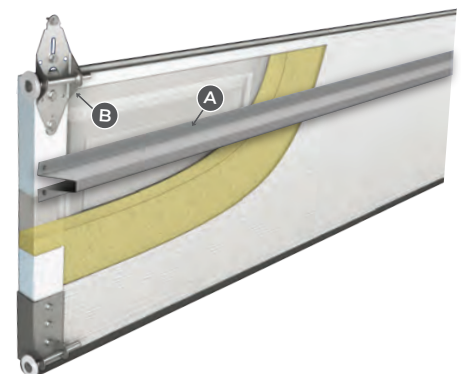
For Your Peace of Mind

Ambient Series garage doors by Safe-Way Door, feature heavy duty 27 gauge steel exteriors with rigid polyurethane core insulation, creating an excellent balance between durability and energy efficiency. Designed to resist high winds and other weather-related events, Ambient Series garage doors offer 9 different colors and 7 different simulated wood grain patterns. Durability, strength, quality, and style combined into one.

Reinforced Hardware

Safe-Way Door's Ambient Series Wind Load doors use additional interior steel reinforcements with increased hardware and springing materials and have been designed and tested to meet code requirements.

- A** Reinforced T-Strut for strengthening door
- B** Commercial-duty steel rollers and hardware to withstand heavier wind pressures



Ambient Series Wind Load Options

Wind Chamber Tested & Approved

Ambient Series Wind Load doors are tested to ANSI/DASMA 108 in an approved wind chamber. Pounds per square foot (PSF) are converted to miles per hour windspeed based on ASCE standards for Safe-Way Door's Ambient Series Wind Load options of products. Testing is based on exposure category C with 30' or less of mean roof height. Design pressures are based on the required MPH windspeeds and test pressures are tested at 1.5 times the design pressure.

INSULATED					
Model	Embossment	Gauge	Warranty	Rating	Max Width
84F/G/H	Long Stamped Carriage	27 Gauge	15 Year	120/130/140 MPH	20'0"
85F/G/H	Short Raised Panel	27 Gauge	15 Year	120/130/140 MPH	20'0"
86F/G/H	Flush	27 Gauge	15 Year	120/130/140 MPH	20'0"
87F/G/H	Long Raised Panel	27 Gauge	15 Year	120/130/140 MPH	20'0"
88F/G/H	Short Stamped Carriage	27 Gauge	15 Year	120/130/140 MPH	20'0"
89F/G/H	Medium Raised Panel	27 Gauge	15 Year	120/130/140 MPH	20'0"
272F/G/H	Pencil Groove	27 Gauge	15 Year	120/130/140 MPH	20'0"
96F/G/H	Short Raised Panel - Madera	27 Gauge	15 Year	120/130/140 MPH	20'0"
98F/G/H	Long Raised Panel - Madera	27 Gauge	15 Year	120/130/140 MPH	20'0"
99F/G/H	Short Stamped Carriage - Madera	27 Gauge	15 Year	120/130/140 MPH	20'0"
100F/G/H	Long Stamped Carriage - Madera	27 Gauge	15 Year	120/130/140 MPH	20'0"
286F/G/H	Flush - Madera	27 Gauge	15 Year	120/130/140 MPH	20'0"
275F/G/H	Pencil Groove - Madera	27 Gauge	15 Year	120/130/140 MPH	20'0"

120 /130/ 140 MPH

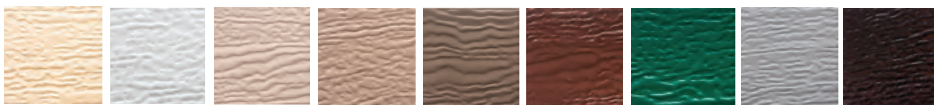
*Size availability by model may vary. Contact dealer for specific details. Corresponding models: F = 120 MPH / G = 130 MPH / H = 140 MPH

120 MPH	Door Size	Design Load PSF
	9' x 7'	+19.1 / -21.6
	16' x 7'	+18.5 / -20.4
	18' x 14'	+16.5 / -18.3

130 MPH	Door Size	Design Load PSF
	9' x 7'	+22.5 / -25.4
	16' x 7'	+21.5 / -23.9
	18' x 14'	+19.3 / -21.5

140 MPH	Door Size	Design Load PSF
	9' x 7'	+26.1 / -29.4
	16' x 7'	+24.9 / -27.8
	18' x 14'	+22.4 / -24.9

Color Options



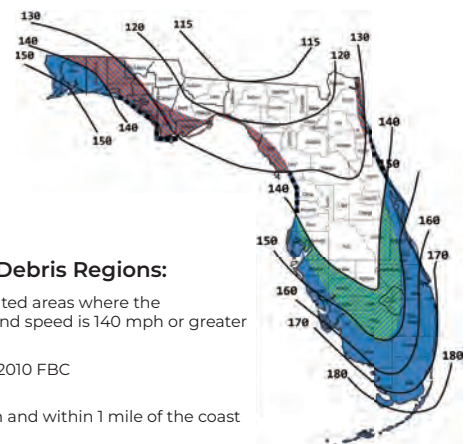
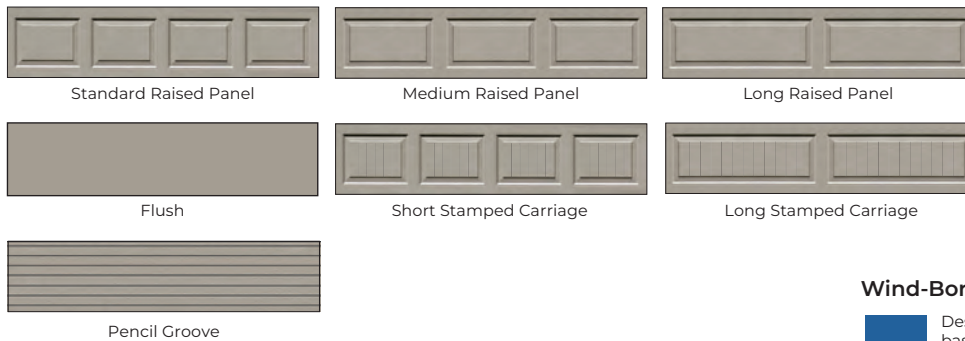
Almond White Desert Tan Sandtone Bronze Brown Hunter Green Grey Black



*Driftwood *Oak *Rosewood *Walnut *Classic *Natural *Plank

*Indicates Madera only

Panel Styles



Wind-Borne Debris Regions:

- Designated areas where the basic wind speed is 140 mph or greater
- New to 2010 FBC
- 130 mph and within 1 mile of the coast

2010, Figure 1609A Colors - Ultimate Design Wind Speed, Florida Building Code, floridabuilding.org.

Distributed by:



As Safe-Way Door constantly strives to improve our product, all specifications listed in this informative brochure are subject to change without notice or obligation. Printed color may vary from actual color, please check with your local dealer for color swatches. 03/2024



877-775-1670

Fax: 800-276-7233

Manufacturing in Warsaw, Indiana
Distribution Centers in Tennessee & Missouri

safewaydoor.com