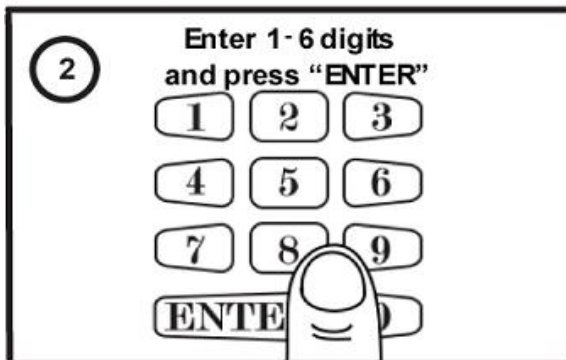
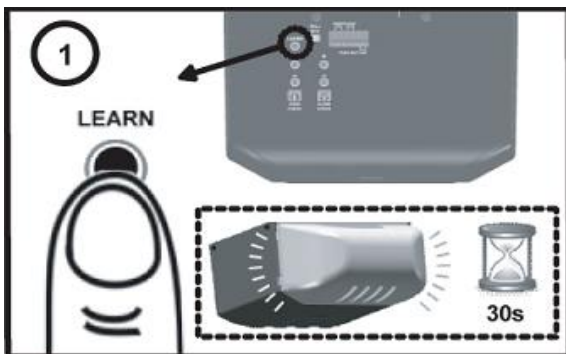




**Guardian Wireless Keyless Entry
Model GDOWLESKEY
Programming Instructions**

The Guardian Keyless Entry can be programmed with any personal code from 2-6 digits.

- The Guardian Keyless Entry can be programmed with up to 20 different secure codes and is capable of activating up to 20 Guardian door operators or receivers.
- The Guardian Keyless Entry will stay active for 20 seconds after every secure activation. This safety feature permits the ENTER button to stop or reverse the operator with one push. Once 20 seconds have passed the Keyless Entry will require the secure code.
- Mount the Keyless Entry by applying the 2 provided screws. The bottom cover must be removed to access the second mounting hole. Do not over-tighten the screws!



STEP 1: Locate the Learn Button (YELLOW) on the back of the Guardian Operator and press the button one time. You will hear 1 beep or the operator light will flash once to confirm the Guardian door operator is now READY to LEARN a new code. You will have 30 seconds to enter your code.

STEP 2: Press your desired 2-6 digit Alpha-numeric code into the Keyless Entry and press ENTER. You will hear 2 courtesy beeps or the operator light will flash twice to confirm communication has been made.

The next activation using your personal code will activate the operator to open or close the door. Always follow your personal code with the ENTER button.

Guardian Access Inc.

PH: 424-272-6998